

A.S.B.A.S.J.S.MEMORIAL COLLEGE ,BELA (ROPAR)

Alumni feedback form on curriculum for the Academic session 2019-2020(odd semester).

GRAPHICALLY RERESENTATION :

Parameter 1 (P1) : You feel proud to be associated with Alumni Association of the college

Parameter 2(P2): Admission procedure

Parameter 3 (P3): Fee structure

Parameter 4 (P4): Infrastructure and Lab facilities

Parameter 5(P5): Faculty

Parameter6 (P6): Quality of support material

Parameter 7(P7): Library

Parameter 8(P8): Canteen Facilities

Parameter 9(P9): Hostel Facilities

Parameter 10(P10): Environment

Parameter 11(P11): Research projects

Parameter 12(P12): Innovative teaching learning methodologies

Parameter 13(P13): Was the principal and teachers cooperative and accessible

Parameter 14(P14): Seminars and Workshop

Parameter 15(P15): Relevance of curriculum in your Job

**Parameter 16(P16): Need any chance in curriculum and syllabus
(Please mention in suggestions)**

Parameter 17(P17): Placements

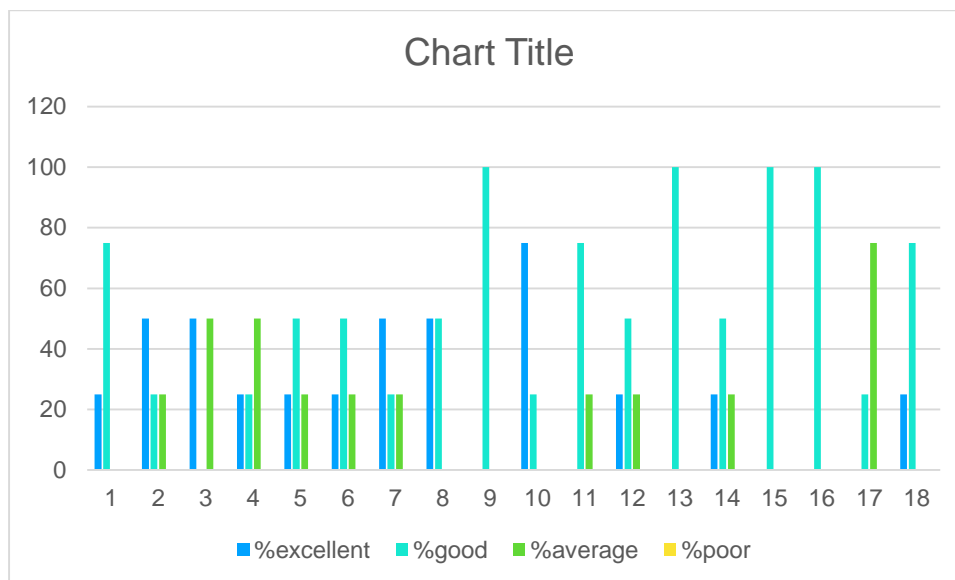
Parameter 18(P18): Overall Rating of the College

HUMANITIES DEPARTMENT :

Sr.no.	Curriculum Evaluation points	Response in %			
		Excellent	Good	Average	Poor
1	You feel proud to be associated with Alumni Association of the college	25	75	0	0
2	Admission procedure	50	25	25	0
3	Fee structure	50	0	50	0
4	Infrastructure and Lab facilities	25	25	50	0
5	Faculty	25	50	25	0
6	Quality of support material	25	50	25	0
7	Library	25	25	50	0
8	Canteen Facilities	50	50	0	0
9	Hostel Facilities	0	100	0	0
10	Environment	75	25	0	0
11	Research projects	0	75	25	0
12	Innovative teaching learning methodologies	25	50	25	0
13	Was the principal and teachers cooperative and accessible ?	0	100	0	0
14	Seminars and Workshop	25	50	25	0
15	Relevance of curriculum in your Job	0	100	0	0
16	Need any chance in curriculum and syllabus (Please mention in suggestions)	0	100	0	0
17	Placements	0	25	75	0

18	Overall Rating of the College	25	75	0	0
----	-------------------------------	----	----	---	---

HUMANITIES DEPARTMENT :



x- axis represented parameters and y axis represented percentage .

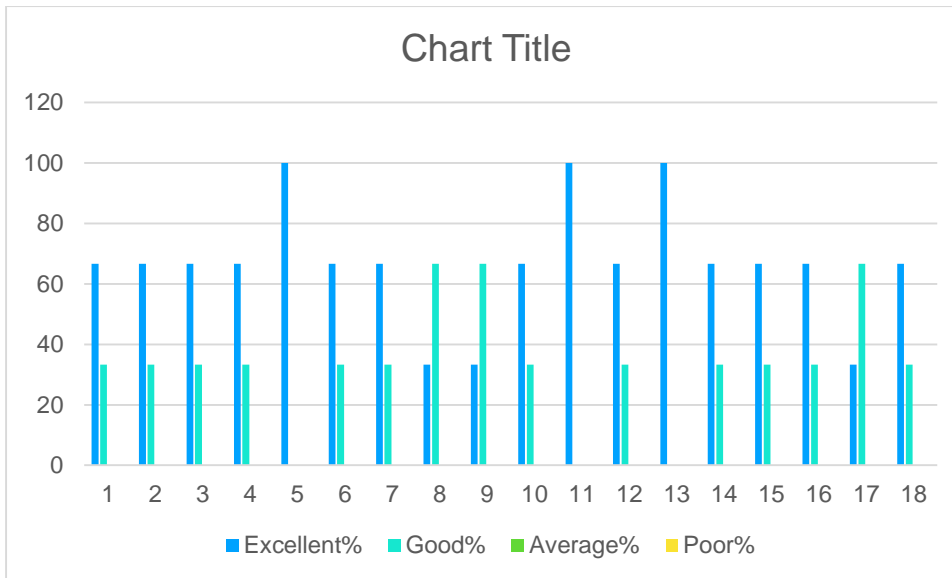
HUMANITIES department say EXCELLENT for the curriculum and other parameter regarding curriculum. 75% excellence response for hostel facilities, 75% Good response for overall rating of college.

COMMERCE DEPARTMENT :

Sr.no.	Curriculum Evaluation points	Response in %			
		Excellent	Good	Average	Poor
1	You feel proud to be associated with Alumni Association of the college	67	33	0	0
2	Admission procedure	67	33	0	0
3	Fee structure	67	33	0	0

4	Infrastructure and Lab facilities	67	33	0	0
5	Faculty	100	0	0	0
6	Quality of support material	67	33	0	0
7	Library	67	33	0	0
8	Canteen Facilities	33	67	0	0
9	Hostel Facilities	33	67	0	0
10	Environment	100	0	0	0
11	Research projects	100	0	0	0
12	Innovative teaching learning methodologies	66	34	0	0
13	Was the principal and teachers cooperative and accessible ?	66	34	0	0
14	Seminars and Workshop	66	34	0	0
15	Relevance of curriculum in your Job	66	34	0	0
16	Need any chance in curriculum and syllabus (Please mention in suggestions)	33	67	0	0
17	Placements	66	34	0	0
18	Overall Rating of the College	66	34	0	0

COMMERCE DEPARTMENT :



x- axis represented parameters and y axis represented percentage .

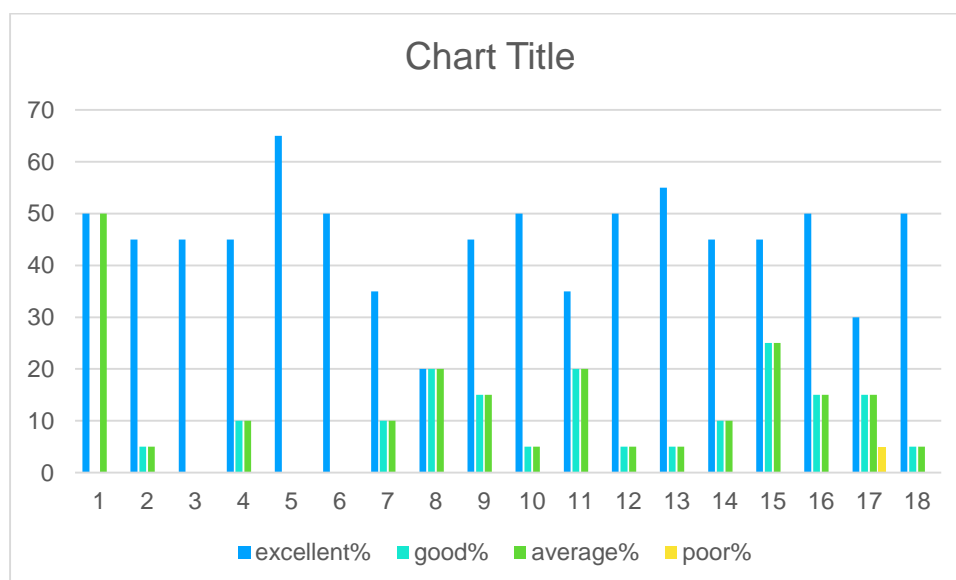
majority of alumni of commerce department say good for the curriculum and other parameter regarding curriculum.100% response of excellence for faculty, 67% responded good for admission procedure,seminor workshop.

SCIENCE DEPARTMENT :

Sr.no.	Curriculum Evaluation points	Response in %			
		Excellent	Good	Average	Poor
1	You feel proud to be associated with Alumni Association of the college	50	0	50	0
2	Admission procedure	45	05	05	0
3	Fee structure	45	0	0	0
4	Infrastructure and Lab facilities	45	10	10	0
5	Faculty	65	0	0	0
6	Quality of support material	50	0	0	0
7	Library	35	10	10	0
8	Canteen Facilities	20	20	20	0

9	Hostel Facilities	45	15	15	0
10	Environment	50	5	5	0
11	Research projects	50	5	5	0
12	Innovative teaching learning methodologies	55	5	5	0
13	Was the principal and teachers cooperative and accessible ?	45	10	10	0
14	Seminars and Workshop	35	20	20	0
15	Relevance of curriculum in your Job	50	5	5	0
16	Need any chance in curriculum and syllabus (Please mention in suggestions)	55	5	5	0
17	Placements	30	15	15	5
18	Overall Rating of the College	50	5	5	0

SCIENCE DEPARTMENT :



x- axis represented parameters and y axis represented percentage .

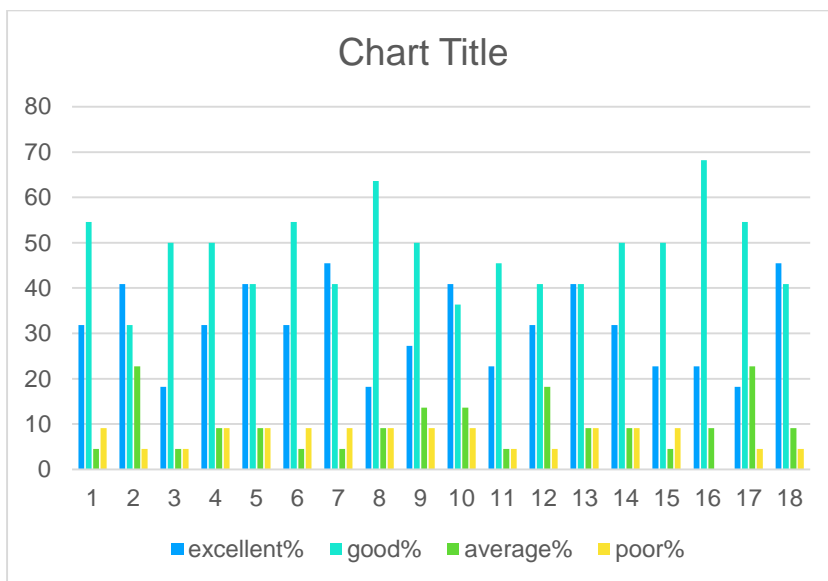
majority of alumni of science department say good for the curriculum and other parameter regarding curriculum. 65%response of excellence for faculty, 45% responded good for admission procedure,seminor workshop.

MATHEMATICS DEPARTMENT:

Sr.no.	Curriculum Evaluation points	Response in %			
		Excellent	Good	Average	Poor
1	You feel proud to be associated with Alumni Association of the college	31	54	5	9
2	Admission procedure	41	31	22	4
3	Fee structure	18	50	4	4
4	Infrastructure and Lab facilities	32	50	9	9
5	Faculty	41	41	9	9
6	Quality of support material	32	54	4	9
7	Library	45	41	4	9
8	Canteen Facilities	18	64	9	9
9	Hostel Facilities	27	50	13	9
10	Environment	41	36	13	9
11	Research projects	22	45	04	04
12	Innovative teaching learning methodologies	31	40	18	04
13	Was the principal and teachers cooperative and accessible ?	41	41	09	09
14	Seminars and Workshop	32	50	9	09
15	Relevance of curriculum in your Job	23	50	4	09

16	Need any chance in curriculum and syllabus (Please mention in suggestions)	23	68	9	0
17	Placements	18	54	22	4
18	Overall Rating of the College	45	41	09	04

MATHEMATICS DEPARTMENT:



x- axis represented parameters and y axis represented percentage .

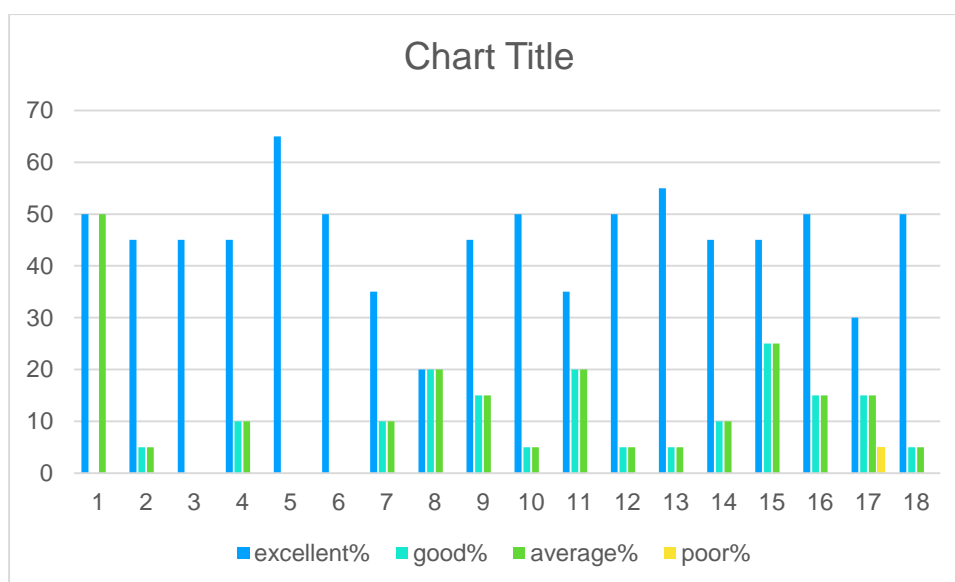
majority of alumni of MATHEMATICS department say good for the curriculum and other parameter regarding curriculum. 41% response of excellence for faculty, 41% responded good for admission procedure, seminar workshop.

BIOTECH DEPARTMENT:

Sr.no.	Curriculum Evaluation points	Response in %			
		Excellent	Good	Average	Poor
1	You feel proud to be associated with Alumni Association of the college	50	0	50	0
2	Admission procedure	45	05	05	0
3	Fee structure	45	0	0	0
4	Infrastructure and Lab facilities	45	10	10	0
5	Faculty	65	0	0	0
6	Quality of support material	50	0	0	0
7	Library	35	10	10	0
8	Canteen Facilities	20	20	20	0
9	Hostel Facilities	45	15	15	0
10	Environment	50	5	5	0
11	Research projects	50	5	5	0
12	Innovative teaching learning methodologies	55	5	5	0
13	Was the principal and teachers cooperative and accessible ?	45	10	10	0

14	Seminars and Workshop	35	20	20	0
15	Relevance of curriculum in your Job	50	5	5	0
16	Need any chance in curriculum and syllabus (Please mention in suggestions)	55	5	5	0
17	Placements	30	15	15	5
18	Overall Rating of the College	50	5	5	0

BIOTECH DEPARTMENT:



x- axis represented parameters and y axis represented percentage .

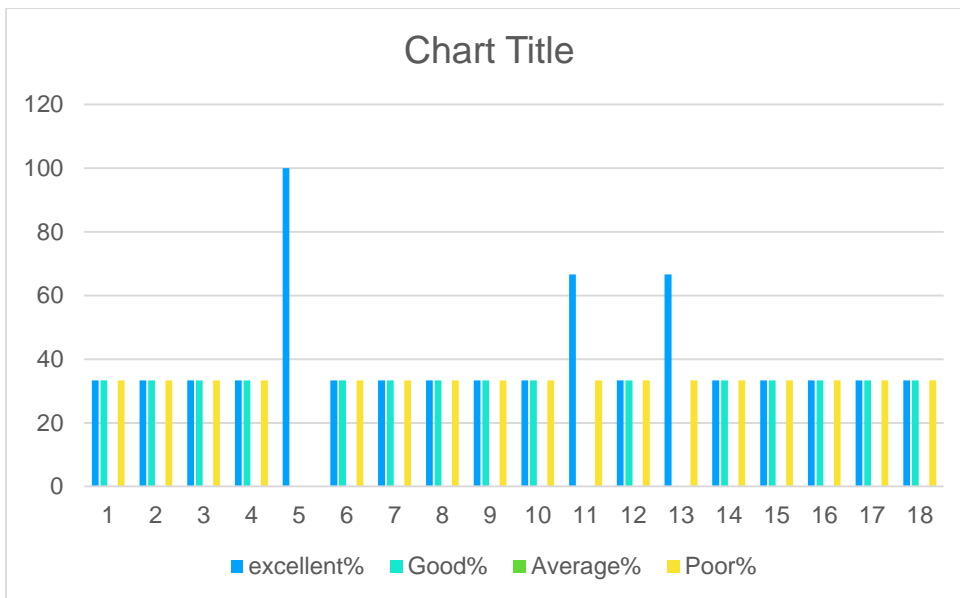
majority of alumni of department say good for the curriculum and other parameter regarding curriculum. 65% response of excellence for faculty, 45% responded good for admission procedure, seminar workshop.

MANAGEMENT DEPARTMENT

Sr.no.	Curriculum Evaluation points	Response in %			
		Excellent	Good	Average	Poor

1	You feel proud to be associated with Alumni Association of the college	33	33	0	33
2.	Quality and relevance of the curriculum for carrier.	33	33	0	33
3	Fee structure	34	33	0	33
4	Infrastructure and Lab facilities	33	33	0	33
5	Faculty	100	0	0	0
6	Quality of support material	33	33	0	33
7	Library	33	33	0	33
8	Canteen Facilities	33	33	0	33
9	Hostel Facilities	33	33	0	33
10	Environment	33	33	0	33
11	Research projects	66	0	0	33
12	Innovative teaching learning methodologies	33	33	0	33
13	Was the principal and teachers cooperative and accessible ?	66	0	0	33
14	Seminars and Workshop	33	33	0	33
15	Relevance of curriculum in your Job	33	33	0	33
16	Need any change in curriculum and syllabus (Please mention in suggestions)	33	33	0	33
17	Placements	33	33	0	33
18	Overall Rating of the College	33	34	0	33

MANAGEMENT DEPARTMENT :



x- axis represented parameters and y axis represented percentage .

majority of alumni of MANAGEMENT department say EXCELLENT for the curriculum and other parameter regarding curriculum.65% response of excellence for faculty, 45% responded good for admission procedure,seminor workshop.

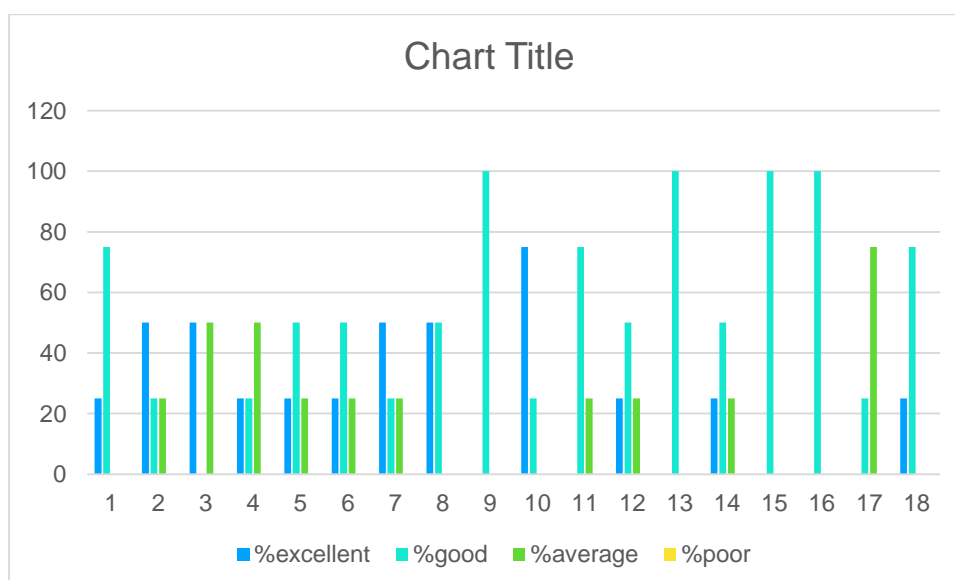
.

COMPUTER DEPARTMENT:

Sr.no.	Curriculum Evaluation points	Response in %			
		Excellent	Good	Average	Poor
1	You feel proud to be associated with Alumni Association of the college	25	75	0	0
2	Admission procedure	50	25	25	0
3	Fee structure	50	0	50	0
4	Infrastructure and Lab facilities	25	25	50	0
5	Faculty	25	50	25	0

6	Quality of support material	25	50	25	0
7	Library	25	25	50	0
8	Canteen Facilities	50	50	0	0
9	Hostel Facilities	0	100	0	0
10	Environment	75	25	0	0
11	Research projects	0	75	25	0
12	Innovative teaching learning methodologies	25	50	25	0
13	Was the principal and teachers cooperative and accessible ?	0	100	0	0
14	Seminars and Workshop	25	50	25	0
15	Relevance of curriculum in your Job	0	100	0	0
16	Need any chance in curriculum and syllabus (Please mention in suggestions)	0	100	0	0
17	Placements	0	25	75	0
18	Overall Rating of the College	25	75	0	0

COMPUTER DEPARTMENT:



x- axis represented parameters and y axis represented percentage .

majority of alumni of COMPUTER department say EXCELLENT for the curriculum and other parameter regarding curriculum.65% response of excellence for faculty, 67% responded good for admission procedure,seminor workshop.

.

